

GSR1700 CSX Specifications

| Positioning ¹ | | |
|-------------------------------------|---|------------------|
| Static ² | H: 5.0 mm + 1.0 ppm V: 8.0 mm + 2.0 ppm | |
| Kinematic, Stop-and-Go ² | H: 10.0 mm + 1.0 ppm V: 12.0 mm + 2.0 ppm | |
| Stand-Alone Position | 1.8 m CEP Horizontal | |
| Tracking Capability | | |
| Channels | 28 universal channels: 14 L1 GPS, 12 L1 GLONASS, 2 SBAS | |
| Time to First Fix | Cold Start - 60 sec Hot Start - 35 sec | |
| Signal Reacquisition | 0.5 sec L1 | |
| Receiver Technology | Pulse Aperture Correlator (PAC) | |
| Physical | | |
| Enclosure | Magnesium alloy housing | |
| Weight (with battery) | 0.672 kg | 1.48 lb |
| Weight (without battery) | 0.622 kg | 1.37 lb |
| Size (Diam. x Height) | 16.7 cm x 10.1 cm | 6.6 in x 4.0 in |
| Power Requirements | | |
| Battery | Internal removable, hot swap capability | |
| Consumption | 1.6 W | |
| Power Input | 6-18 VDC; <2.5 Amps | |
| Operating Time | Static - 10 hours | |
| Environmental | | |
| Operating Temperature ³ | -40°C to +60°C | -40°F to +140°F |
| Storage Temperature | -40°C to +60°C | -40°F to +140°F |
| Humidity | 100% condensing | |
| Dust and Waterproof | Complete protection against dust ingress. Protected against immersion up to 1.0 m / 3.3 ft (IP67) | |
| Shock ⁴ | 2.0 m pole drop 30G per IEC 68-2-27 | 6.6 ft pole drop |
| RoHS Compliant | Yes | |

| Ports & Communications Signals | |
|---|--|
| Communication | 2 x RS232, 2 x Bluetooth <i>Note: second RS232 port available with the use of a special "Y" cable (sold separately)</i> |
| Power | 6-18 VDC; <2.5 Amps |
| Standard Input/Output | Mark in; PPS out |
| Interface | |
| Operation | Single-button operation for power up, receiver reset and file management |
| Display | LED display status indicators |
| Status Indicators | Power, battery life, satellites tracked, available memory, occupation timer, communications status |
| Audible Indicators ⁵ | Audible notifications for receiver status information; available in a variety of languages |
| Data Recording and Message Formats | |
| Memory | 64 MB removable CF (upgradeable to 2 GB) |
| Memory Life | 560 hours at 10 second interval (10 SV) |
| Standard Input/Output | RTCM, RTCM V3.0, RTCA, CMR, CMR+, NMEA-0183 out |
| Data Rate | 10 Hz |
| Data Links | |
| External ⁶ | Yes. Fully supported |
| Antenna | |
| Type | Fully integrated geodetic GNSS antenna |
| <ol style="list-style-type: none"> 1. Accuracy depends on the number of satellites used, obstructions, satellite geometry (DOP), occupation time, multipath effects, atmospheric conditions, baseline length, survey procedures and data quality. 2. Standard RMS confidence level. 3. On external power. 4. Shock specifications based on receiver without cables attached. 5. English, Russian, Spanish, Portuguese, French, Italian, Japanese, Korean, Chinese, General Tones. 6. Supports most external data links with serial connection, such as Pacific Crest and SATEL UHF radios, and select Bluetooth devices, such as Bluetooth-enabled mobile phones. | |

SOKKIA

GSR1700 CSX

Integrated L1 GNSS System



SOKKIA Worldwide

SOKKIA TOPCON CO., LTD. Head Office, Japan Phone +81-46-248-7984 www.sokkia.co.jp ISO9001 Certified (JQA-0557)
 SOKKIA CORPORATION Head Office U.S.A. Phone +1-800-255-3913 www.sokkia.com
 SOKKIA CORPORATION Head Office Canada Phone +1-905-238-5810 www.sokkiacanada.com
 SOKKIA LATIN AMERICA Head Office Latin America Phone +1-305-599-4701 www.sokkialatinamerica.com
 SOKKIA PTY. LTD. Head Office Australia, New Zealand and South Pacific Phone +61-2-9638-2400 www.sokkia.com.au
 SOKKIA B.V. Head Office Europe & other CIS countries Phone +31-(0)36-5496000 www.sokkia.net
 SOKKIA KOREA CO., LTD. Head Office Republic of Korea Phone +82-2-514-0491 www.sokkia.co.kr
 SOKKIA SINGAPORE PTE. LTD. Head Office South & Southeast Asia, Middle East, and Africa Phone +65-6479-3966 www.sokkia.com.sg
 SOKKIA SURVEYING INSTRUMENTS TRADING (SHANGHAI) CO., LTD. Shanghai Office, People's Republic of China Phone +86-21-63541844 www.sokkia.com.cn
 SOKKIA CO., LTD. Beijing Representative Office, People's Republic of China Phone +86-10-65056066 www.sokkia.com.cn

POINT, Inc. — Integrated Measurement Solutions
 ©2008 POINT, Inc. SOKKIA is a trademark of SOKKIA TOPCON Co. Ltd. All rights reserved. Microsoft Windows is a registered trademark of Microsoft Corporation in the United States and/or other countries. Other trademarks and trade names are those of their respective owners.

Your Authorized SOKKIA Distributor Is:

SOKKIA

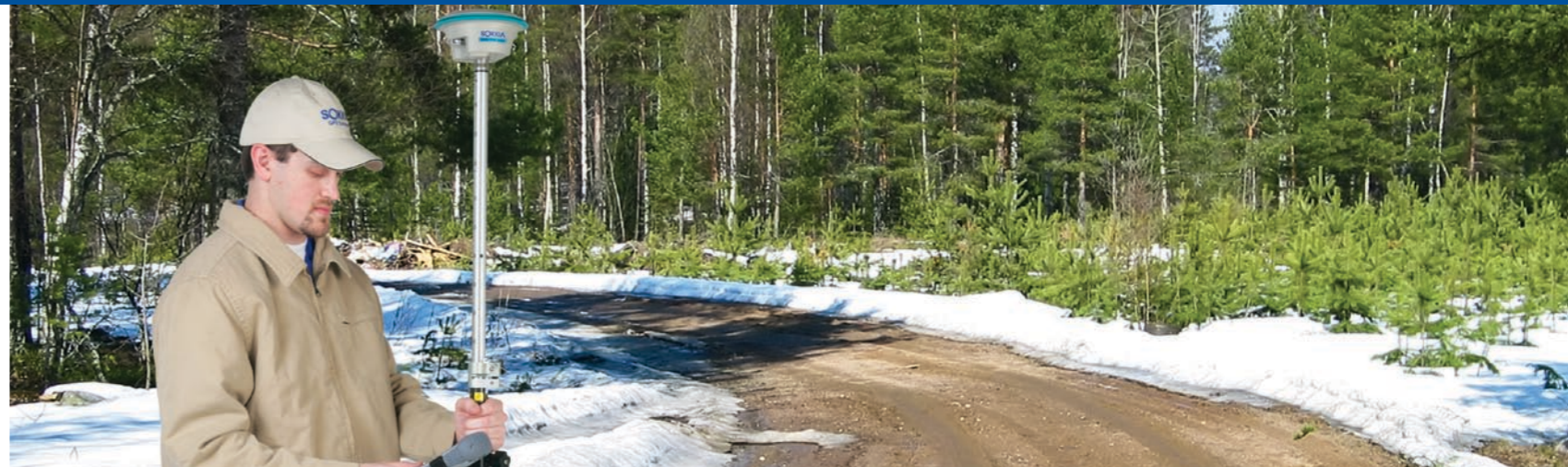
790-0-0082
Printed in the U.S.A.Precision &
Reliability

GSR1700 CSX

Integrated L1 GNSS System

GSR1700 CSX GNSS survey system empowers surveyors to quickly and easily collect centimeter accurate survey points for topographic and control surveys with unmatched reliability and ease-of-use. This small, lightweight, yet rugged, GPS + GLONASS receiver eliminates observation range and line-of-sight limitations of conventional surveying, increasing efficiency and maximizing productivity in the field.

The affordability and minimal learning curve of the GSR1700 CSX enables surveyors to harness the power of GPS surveying right away, making it a valuable asset in any surveyor's toolbox. A controller is optional with the GSR1700 CSX - just press the receiver's power button to start surveying.



Powerful. Accurate. Anywhere.



Compact, rugged, easy-to-use system

The GSR1700 CSX is designed for surveyors wanting a lightweight, easy-to-use survey solution that offers the best in accuracy.

Superior ease-of-use

- Simple GPS survey workflows ensure that you'll be up and running quickly
- Intuitive, intelligent software guides you through multiple GPS survey types
- Built-in diagnostic and quality control tools eliminate costly trips back to the worksite

Unmatched handling

- Cable-free in all setups
- Lightweight – only 0.67 kg
- Controller-optional operation
- Connects to multiple **Bluetooth®** wireless peripherals

Unparalleled durability

- Operates in extreme temperatures from -40° C to +60° C
- Complete protection against dust/water
- Ruggedized to handle a 2m pole drop

Adapts to your requirements

- Voice notifications in 10 different languages alert you immediately of status changes in your survey
- Superior LED display provides all the information needed to complete the job
- Seamless support of continuously operating reference stations (CORS) offers easy interface with third-party data warehouses
- Upgrade capability for additional functionality in the future
- Data is conveniently stored on a Compact Flash® card

Flexible and efficient surveying

Simple operation without a controller

With one button, the GSR1700 CSX starts static GPS surveys to rapidly and easily establish additional control points in your survey area.

Powerful static and kinematic surveying

Combine the GSR1700 CSX with SDR+ S/K Edition for powerful static, stop-and-go and kinematic surveying. GNSS surveying has never been easier with the simple, yet effective, Navigate, Locate, Survey workflow. Quickly collect centimeter accurate survey points while SDR+ S/K Edition guides you at every step and verifies that your GPS survey is complete before you leave the job site.

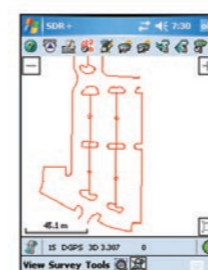
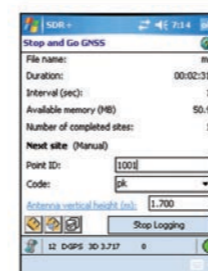
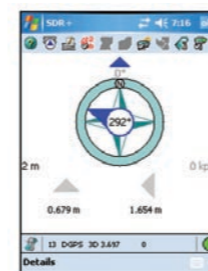
Its minimal learning curve will have you completing your survey jobs faster with less effort in no time with the GSR1700 CSX.

GNSS System

Reliable positioning in any environment

The GSR1700 CSX features 28 universal channels that support both GPS and GLONASS, providing increased satellite coverage in forests and urban areas. In addition, Pulse Aperture Correlator (PAC) technology guarantees superior tracking capability in the presence of multipath to optimize measurement performance even in the harshest conditions. These features ensure reliable GPS survey even in poor satellite tracking conditions.

SDR+ S/K Edition Software



Simple and powerful

SDR+ S/K Edition features an easy, icon-based interface and intuitive wizard-style workflows, which minimizes training time and ensures you'll be surveying in no time. User-defined hot keys and customizable onscreen toolbar helps you tailor the application for your most commonly used functions. The software operates on all Windows Mobile® touchscreen devices.

Navigate, Locate, Survey

The graphical navigation and background base map help to quickly locate survey monuments and other points of interest. Set up the GSR1700 CSX over your point and press one key to start surveying, and automatic prompts will query you for all relevant survey site information. Other GSR1700 CSX receivers can then be connected to survey more control and topographic points in the same job.

Streamlined data collection

SDR+ S/K Edition guides you through static, stop-and-go and kinematic data collection. Customizable survey and blunder detection tools help you meet survey specifications. Document your survey with feature codes and record field observations with survey notes.

Comprehensive coordinate system support

Work with any coordinate system, including local systems, at any time in your job. Perform surveys in one coordinate system and import, key-in and export survey information in any other coordinate system as required – transformation into your current coordinate system is instantaneous.

Cross-functional with total stations

SDR+ S/K Edition can be upgraded to SDR+ Professional Edition at any time to work with the GSR1700 CSX and SOKKIA total stations on the same controller and in the same job. Combine the power of GNSS surveying with optical instruments by learning and using only one data collection platform for all your survey work and minimize time spent transferring data.

Spectrum Survey Suite Software

With this easy-to-use Windows®-based software, quickly download and process GPS + GLONASS survey data and deliver centimeter accurate survey points. Its simple, yet powerful, workflow makes all steps of your static, stop and go or kinematic survey easy with its broad array of tools.

From mission planning to processing, adjusting and exporting survey data, Spectrum Survey Suite ensures that your survey meets specifications with its advanced error detection. Data quality analysis tools and loop closures guarantee accurate, reliable post-processing. Perform a comprehensive network adjustment to get a perfect fit for your survey. Export survey data in a wide variety of industry standard formats.

