

SOKKIA

GSR2700 RS

and GSR Reference Station Software



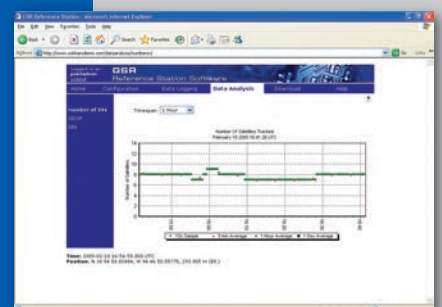
SOKKIA's GSR2700 RS and GSR Reference Station Software allow you to access valuable GPS data via the Internet 24 hours a day, seven days a week. The GSR2700 RS features a high-precision, dual-frequency GPS receiver and Windows® XP based PC with 80 GB hard drive. GSR Reference Station Software is accessible from any computer with an available Internet browser. Use the software to create custom log configurations, gather graphical plots of recent and past satellite information and more.

GSR2700 RS Features

- State-of-the-art, high-precision, dual-frequency GPS receiver
- Includes an Intel Windows® XP based PC with 80 GB hard drive
- 19" rack mount to fit standard four-post server rack (rails included)
- Compatible with a variety of SOKKIA GPS antennas
- Built-in Ethernet port for easy connectivity

GSR Reference Station Software Features

- Provides data access 24 hours a day, seven days a week
- Accessible from any computer with an available Internet browser
- Create custom data collection sessions and log several sessions simultaneously
- Create customized files – name, duration, epoch interval, sessions (time and length), and elevation mask
- Log data in native or RINEX format
- Control receiver remotely through an Internet connection
- Compatible with SOKKIA's GSR2700 ISX, GSR2700 IS, GSR2600, GSR2650 LB and GSR2700 RS GPS receivers
- Graphical plots of current and past satellite information (number, DOP, etc.)
- Customize user accounts to limit accessibility
- User-defined site configuration
- Remote upload of receiver firmware
- Send files automatically to FTP server
- User-defined automatic clean up of data files
- Run on Microsoft Windows® XP Professional for optimal performance



GSR2700 RS Specifications

| Position Accuracy | | |
|------------------------------------|---|-----------------------------------|
| Static ¹ | 3.0 mm + 0.5 ppm (horizontal); 10.0 mm + 1 ppm (vertical) | |
| Channels | | |
| | 12 x L1 and 12 x L2 with full code and carrier | |
| Time to First Fix | | |
| Cold Start | 50 sec (typical) | |
| Signal Reacquisition | 0.5 sec L1 and 1.0 sec L2 (typical) | |
| Data Rates ² | 20 Hz | |
| Physical | | |
| Weight | 12.2 kg / 16.4 kg with rack rails | 26.8 lb / 36.1 lb with rack rails |
| Dimensions (h x w x d) | 4.3 cm x 43.0 cm x 67.2 cm | 1.7 in x 16.9 in x 26.5 in |
| Environmental | | |
| Operating Temperature ³ | +10° C to +35° C | +50° F to +95° F |
| Storage Temperature | -40° C to +70° C | -40° F to +158° F |
| Humidity | 95% non-condensing at +30° C (non-operating); 95% non-condensing at +86° F (non-operating) | |
| Power | | |
| Supply | 110–220 V AC Power (nominal) | |
| Consumption | GPS card and carrier board 1.95W (typical) Rated for 350 watts of power at the following voltages: • 100-127 V at 50/60 Hz; 5.67 A maximum • 200-240 V at 50/60 Hz; 2.89 A maximum | |
| Ports | | |
| Computer | 1 x Power, 1 x RS232, 3 x USB, 2 x Ethernet (10/100 MB and 1 GB LAN), 1 x parallel, 1 x VGA | |
| GPS | 1 x Antenna, 1 x RS232, 1 x External Oscillator (SMA) | |

GSR Reference Station Software Minimum System Requirements

| | |
|------------------|--|
| Operating System | Microsoft® Windows® XP Professional (Recommended for optimal performance) |
| Processor | Minimum: Pentium® class 233 MHz or better. Recommended: Pentium® class 1.5 GHz or better. |
| Memory | Minimum: 128 MB RAM with 20 GB free disk space, plus extra available for collected data storage. Recommended: 256 MB RAM with 100 GB free disk space. |
| Display | Super VGA monitor |
| Drives | CD or DVD drive |
| Input | Microsoft® Windows® compatible keyboard and mouse |
| Ports | One serial port |
| Browser | Microsoft® Internet Explorer 5.0 or higher, Netscape® 7.0 or higher, or Firefox 1.0 |
| Network | Ethernet card |

1. Accuracy depends on the number of satellites used, obstructions, satellite geometry (DOP), occupation time, multipath effects, atmospheric conditions, baseline length, survey procedures and data quality.

2. Maximum data rate is dependent on number of active sessions and data being collected.

3. Maximum rate of change not to exceed 10° C (50° F) per hour.

Design and specifications are subject to change without notice.

THE SOKKIA DIFFERENCE – SOKKIA has been developing advanced products for surveying professionals around the world since 1920. We are very proud of our **heritage**. It is our mission to provide you with products of the highest **quality** so you can do the job right the first time – every time. And we **support** our products long after the sale is complete. With that kind of **value**, it is no wonder surveyors everywhere count on SOKKIA for their most important projects.

SOKKIA Worldwide

SOKKIA CO., LTD. Head Office, Japan Phone +81-46-248-7984 www.sokkia.co.jp ISO9001 Certified (JQA-0557)

SOKKIA CORPORATION Head Office U.S.A. Phone +1-800-255-3913 www.sokkia.com

SOKKIA CORPORATION Head Office Canada Phone +1-905-238-5810 www.sokkiacanada.com

SOKKIA LATIN AMERICA Head Office Latin America Phone +1-305-599-4701 www.sokkialatinamerica.com

SOKKIA PTY. LTD. Head Office Australia, New Zealand and South Pacific Phone +61-2-9638-2400 www.sokkia.com.au

SOKKIA B.V. Head Office Europe & other CIS countries Phone +31-(0)36-5496000 www.sokkia.net

SOKKIA KOREA CO., LTD. Head Office Republic of Korea Phone +82-2-514-0491 www.sokkia.co.kr

SOKKIA SINGAPORE PTE. LTD. Head Office South & Southeast Asia, Middle East, and Africa Phone +65-6479-3966 www.sokkia.com.sg

SOKKIA SURVEYING INSTRUMENTS TRADING (SHANGHAI) CO., LTD. Shanghai Office, People's Republic of China Phone +86-21-63541844 www.sokkia.com.cn

SOKKIA SURVEYING INSTRUMENTS TRADING (SHANGHAI) CO., LTD. Beijing Office People's Republic of China Phone +86-10-65056066 www.sokkia.com.cn

Your Authorized SOKKIA Distributor Is:

POINT, Inc. — Integrated Measurement Solutions

©2007 POINT, Inc. SOKKIA is a trademark of SOKKIA Co. Ltd. All rights reserved. Microsoft Windows is a registered trademark of Microsoft Corporation in the United States and/or other countries. Other trademarks and trade names are those of their respective owners.

790-0-0068

Printed In the U.S.A. — 3/07

SOKKIA